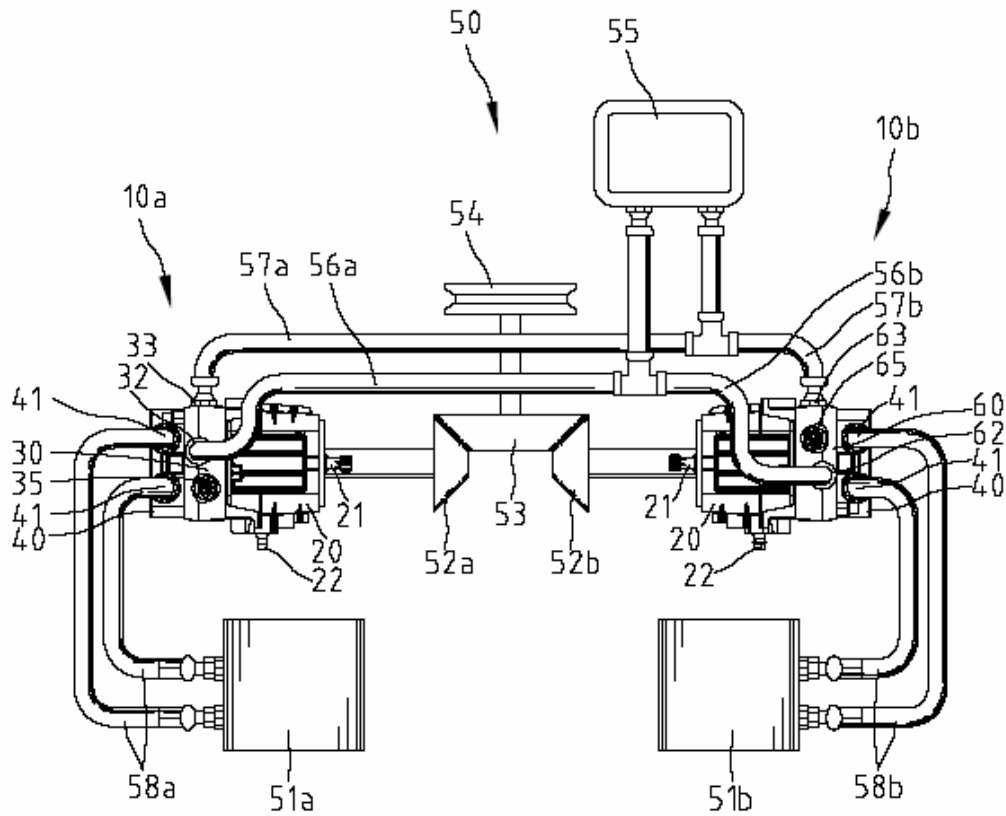


SONIC HYDRAULICS/ A DIVISION OF SONIC TRACTOR PARTS, INC.
 STP-1000 SERIES PUMPS



- 30 End Cap
- 40 Connecting Cap
- 41 Hydraulic pump Port (connecting to hydraulic motor)
- 51A/B Hydraulic Motors
- 55 Oil Tank (Oil reservoir)
- 56A/B Oil Pipes
- 57A/B Oil Pipes
- 58A/B Oil Pipes
- 32 & 62 Oil Suction Hole (hydraulic oil from reservoir to pump)
- 33 & 63 Oil Relief Hole (oil drain port)
- 35 & 65 Bypass Valve

POSSIBLE CAUSES FOR NO/LOW POWER OF UNIT

Engine RPM low	Adjust to correct setting
Control linkage bent, loose or out of adjustment	Repair or replace vehicle linkage
Drive belt slipping or pulley damaged	Repair or replace drive belt or pulley
Oil level low or contaminated oil	Fill to proper level or change oil
Excessive loading	Reduce vehicle load
Bypass loose	Tighten bypass per page
Air trapped in hydraulic system	Purge hydraulic system per page
Inlet leak	Check all externals to BDP inlet
Inlet filter clogged	Replace filter
Suspected internal damage	